



# Evans River K-12 School

## *Ours is the Future*



*Evans River K-12 is a community school and is committed to excellence in academic and practical education in a safe, friendly and caring environment emphasizing personal growth, positive interactions and support between students, staff and community.*

### **A quality education for students of all ages**

At Evans River K-12 students learn in a dynamic learning environment where individual academic achievement and citizenship is promoted. Our school offers a quality education for students of all ages: from pre-school children undertaking the Transition to School program, to Kindergarten, the School Certificate and Higher School Certificate.

Our teachers create programs that challenge and inspire students to achieve at school and in the workforce. Our staff includes teachers of gifted and talented education, Learning Difficulties and Reading Recovery.

We ensure our teaching is inclusive of differing views and beliefs, reflective of contemporary Australian life and sensitive to the rich history shared by all Australians.

### **Unique and innovative programs**

Evans River K-12 is renowned for its innovative Middle School and Mentoring Program which prepares students for a smooth transition between primary and secondary studies.

Primary students enjoy the benefit of secondary specialist teachers, while high school students are challenged in small groups with a unique, nationally recognised curriculum.

The Fearless Leaders mentoring program link Year 7 and Year 10 students together, while the Primary Peer Support program builds friendships and respect among primary aged students.

### **Excellence in literacy and numeracy**

Our school has a strong emphasis on literacy and numeracy with support programs if needed. Infants and primary students benefit from small literacy and numeracy groups and have the added benefit of trained SLSOs assisting classroom teachers.

### **Wide range of secondary subjects**

Our secondary students have access to a broad range of subjects taught by highly qualified specialist teachers.

Year 7 to 10 students acquire a sound foundation in the core subjects of English, Mathematics, Science and Human Society and its Environment (HSIE). In Year 9

## Welcome

On behalf of the staff and students, I would like to welcome you and your family to our school. We hope that you will join with our existing parents in the many activities the school offers that involve parents.

Evans River K-12 School provides educational services for not only the students of Evans Head, but of Woodburn, Coraki, Broadwater, Boundary Creek, New Italy, Tabbimoble, Swan Bay, Bungawalbyn, Dungarubba and Bora Ridge.

We hope that this information will be of use if you have any routine queries about the school, but if you are still unsure of anything, please do not hesitate to contact the school. If you have any help to offer or to find out how you can help, please contact the school. We find that open communication assists greatly in everything we do.

Above all, we encourage you to come along to open days, school functions and parent interviews. Students of every age appreciate their parents involvement with their school. As a school staff we cannot emphasise enough the value we place on the three relationships: teacher - student, teacher - parent, and parent - student. If these bonds are strong, and work with common purpose much can be achieved for your child's education.



Again, please accept our warm welcome and our hope that you and your children will both enjoy and benefit from, your association with Evans River K-12 School.

Rob Walker  
Principal

a range of electives such as Drama, Music, Marine Studies, Food Technology, Indonesian and Art cater for individual interests and goals.

Students in Years 11 and 12 are offered a wide subject choice to match their interests, abilities and educational goals including popular and successful vocational education program. Evans River offers challenging extension programs, innovative school-based programs and flexible study pathways for the Higher School Certificate.

### Values and citizenship

Through daily social interaction as well as specific learning experiences, our teachers help students develop their capacity for moral reasoning and judgment and encourage ethical behaviour and social responsibility.

Our Student Representative Council (SRC) comprises of elected students from every year group.

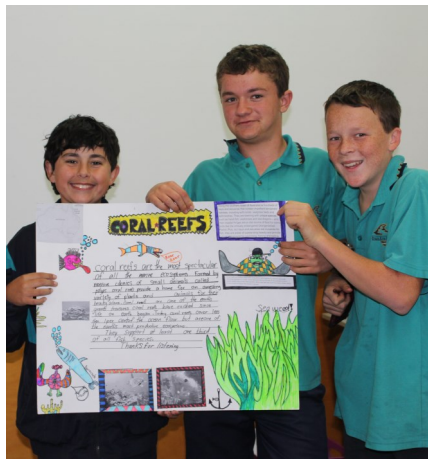
Students develop confidence and self-esteem through participation in democratic processes and public speaking.

The EcoWarriors student environment group work within the school and wider community on projects that instill a sense of social commitment and school pride.

### Reporting to parents

Parents are invited to make an appointment to see their child's teacher or year advisor at any time to discuss progress. Student Led Conference (K-6) and Parent Teacher Night (Year 7-12) are conducted Terms 2 & 4, giving you an opportunity to meet your child's teachers. Interim reports are issued Term 1 to give parents and carer's an understanding of how well your child is performing.

A copy of the school annual report is available on request.



## CLASS RULES

Take responsibility for your own learning and make it your first aim  
Always do your best  
Follow directions, behave sensibly and safely  
Respect one another  
Be prepared and on time  
Take care of your environment

## OUR VALUES

|                       |   |
|-----------------------|---|
| <b>Integrity</b>      | Being consistent honest and trustworthy.  |
| <b>Excellence</b>     | Striving for the highest personal achievement in all aspects of schooling and individual community action, work and life-long learning.   |
| <b>Respect</b>        | Having regard for yourself and others, lawful and just authority and diversity within Australian society and accepting the right of others to hold different or opposing views. |
| <b>Responsibility</b> | Being accountable for your individual and community's actions towards yourself, others and the environment.   |
| <b>Cooperation</b>    | Working together to achieve common goals, providing support to others and engaging in peaceful resolution of conflict.  |
| <b>Participation</b>  | Being a proactive and productive individual and group member, having pride in and contributing to the social and economic wealth of the community and the nation.               |
| <b>Care</b>           | Concern for the wellbeing of yourself and others, demonstrating empathy and acting with compassion.   |
| <b>Fairness</b>       | Being committed to the principles of social justice and opposing prejudice, dishonesty and injustice.   |
| <b>Democracy</b>      | Accepting and promoting the rights, freedoms and responsibilities of being an Australian citizen.   |

*Ours is the Future*

## School's Senior Executive

### Principal Rob Walker



The Principal must see that the school's policies and procedures reflect the aims and objectives of the school. The Principal must ensure that they comply with the rules and regulations of the Department of Education, and that all requirements of the Board of Studies are met. In performing these duties, the Principal has overall responsibility for the effective running of the school

### Deputy Principal K-7 Yvonne Sharpe



Yvonne supports the Principal in curriculum development, professional development of staff and Student Wellbeing for K-7. She works with our local Pre-Schools and Primary Schools to successfully transition students to Kindergarten and Year 7.

### Deputy Principal 8-12 Jenny Hart



Jenny supports the Principal in the leadership of curriculum development and implementation of Stages 4, 5 & 6. She coordinates and administers the Student Wellbeing Policy for Years 8-12.

## Student and family support

### Kindergarten - Year 6

#### Class Teachers

If you feel your child is having trouble with any aspects of their learning or social development the first person to talk to is your child's class teacher. To make an appointment outside class times call the school office.

### Years 7 - 12

#### Head Teachers

If your child continues to be troubled in a certain subject area you and/or your child should see the appropriate Head Teacher. In some cases it is necessary for the Head Teacher to be involved in the counselling and discipline of students.

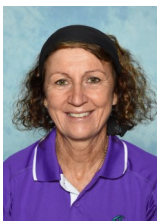
#### Year Advisers

Your child's Year Adviser is there to help them with problems, concerns and any special needs. Parent contact is most welcome.

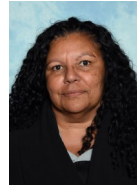
|         |                 |
|---------|-----------------|
| Year 7  | Desiree Cotten  |
| Year 8  | Chris Gillespie |
| Year 9  | Peter Beck      |
| Year 10 | Karen Warwick   |
| Year 11 | Greta Nagle     |
| Year 12 | Alison McGeary  |

To make an appointment outside class times call the school office.

#### Head Teacher Special Education



Connie D'Anna provides support for students with learning difficulties. Connie works with students in various ways assisting class teachers, small group work, individual tuition, guidance for parents and students concerned with ADD and other factors affecting learning. Connie is the Support Programs Coordinator & Student Teacher Learning. She supports the student community - has developed work in school programs e.g. WISP Team, Green Team, ERBS (Evans River Breakfast Squad). Introduced modified programs for students with learning difficulties and liaises with outside agencies for employment opportunities.



#### Aboriginal Education Officer

Simone Barker supports staff, students and community by improving relationships for Aboriginal and Torres Strait Islander students and their families. Simone assists the school community in understanding and appreciating the cultural significance of local Bundjalung and other language groups. To make an appointment contact the front office.



#### Careers Adviser

Chris Hayward, the relieving Careers Advisor is available for consultation regarding students' future career decisions. Students and parents have access to a range of printed and computer based material to assist in making sound decisions for future directions. Chris coordinates all work placements for Year 10 students, individually counsels students on career planning matters and helps students prepare for the transition to employment and/or further education. He is at school all week and can be contacted via the front office for an appointment.

#### Community Liaison Officer

The CLO's role is to act as a link between home, school and the wider community, assisting parents to understand school systems, encouraging their voice in school decision making and working with volunteers. The CLO is at school Monday to Wednesday.

#### Support Teacher

##### (Special Education - Mild Intellectual Disability)

Maryanne Clark supports students with a mild intellectual disability in Year 7-12. She is responsible for the development and implementation of each student's learning program and identification of the most effective strategies for its implementation. A Personal Learning Program (PLP) is implemented for each student and it is developed collaboratively with appropriate staff and the student's family. Maryanne liaises with community agencies to achieve the best possible outcomes for the students.



## Student and family support continued

### Support Teacher (Special Education - School Counsellor) MultiCategorical Class MCC)



Bianca Spencer supports students diagnosed with autism, behavior needs or a moderate intellectual disability in Years 7-12. She is responsible for the development and implementation of each student's learning program and identification of the most effective strategies for its implementation. A Personal Learning Program (PLP) is implemented for each student and it is developed collaboratively with appropriate staff and the student's family. Bianca liaises with community agencies to achieve the best possible outcomes for the students.

Aina Martin works with all students from Kindergarten to Year 12. As school counsellor she undertakes assessments, interviews and counseling sessions and is an active participant of the school's Welfare Committee, Learning Support Team and Positive Behaviour for Learning program. Proactive counseling and staff awareness programs are an integral part of the school's counseling services. Aina is at school on Mondays, Thursdays and Fridays and welcomes parent contact by making an appointment with the front office.



### Support Teacher (Special Education - MultiCategorical Class MCC)



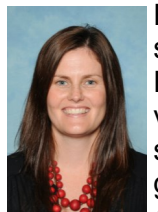
Jeff Towers supports students diagnosed with autism, behavior needs or a moderate intellectual disability in Years 7-12. He is responsible for the development and implementation of each student's learning program and identification of the most effective strategies for its implementation. A Personal Learning Program (PLP) is implemented for each student and it is developed collaboratively with appropriate staff and the student's family. Jeff liaises with community agencies to achieve the best possible outcomes for the students.

### Special Religious Education

Les Moreman holds scripture lessons for all Year 7-10 students for a period each week. His class gives the students the opportunity to consider and discuss the spiritual side of life, with particular focus on the values for life that can be learnt through the life and teachings of Jesus. Les is employed by the Evans Head Ministers' Fraternal.

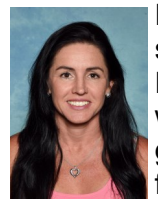


### K-6 Learning and Support Teacher



Elizabeth Delman provides support for students with learning difficulties. Elizabeth works with students in various ways assisting class teachers, small group work, individual tuition, guidance for parents and students concerned with ADD and other factors affecting learning.

### Learning and Support Teacher



Fiona Fields provides support for students with learning difficulties. Fiona works with students in various ways assisting class teachers, small group work, individual tuition, guidance for parents and students concerned with ADD and other factors affecting learning.

### Student Support Worker

Employed under the Federal Governments Chaplaincy Program, AJ Brown works to support students and the wider school community in a range of ways including assisting students explore their spirituality; providing guidance on religious, values and ethical matters; helping school counsellors and staff in offering welfare services and support in cases of bereavement, family breakdown or other crisis and loss situations. Chaplains are expected to respect the range of religious views and affiliations, and cultural traditions in the school community, and be approachable by students of all faiths. Staff refer students to AJ, though parents are welcome to make contact via the front office.



## Contacting the school

|                       |                                    |
|-----------------------|------------------------------------|
| Site & postal address | Cypress Street, Evans Head, 2473   |
| Phone number          | (02) 6682 6666                     |
| Fax number            | (02) 6682 6777                     |
| Email                 | evansriver-c.school@det.nsw.edu.au |
| Website               | www.evansriver.nsw.edu.au          |
| Office hours          | 8:30am - 3:30pm                    |
| Uniform shop          | Friday 8:30 - 9:30am               |

## School organisation

### *School hours*

|                        |  |
|------------------------|--|
| Kindergarten – Year 6  | 9:00am - 2:55pm                        |
| Years 7 - 12 Mon       | 9:00am - 3:05pm                        |
| Years 7 - 12 Tue - Fri | 9:00am - 3:30pm                        |
| Years 11 - 12          | 8:30am start if student has a 0 period |

Students should not arrive before 8:30am (except those traveling on the early bus), and students should leave promptly at 3:30pm.

|        |                 |
|--------|-----------------|
| Recess | 11:00 - 11:25am |
| Lunch  | 1:05 - 1:50pm   |

*Please note:* Classes for Year 7 - 12 students conclude at 3:05pm on Mondays  
Supervision is provided for bus students until the final bus departs  
K-12 assemblies in Weeks 1 & 5 assemblies are held at 1:00pm  
Lunchtimes change to 1:25 – 2:15pm  
K-6 Assemblies are Fridays 9:30am

### **Kindergarten – Year 12 Roll Call**

Students are to be at school by 8:45am for class or roll group meetings where rolls are marked. Lateness is noted and recorded.

Year 11 and 12 students who have zero periods are required in class at 8:30am.

### **School Terms - 2018**

|        |   |
|--------|---|
| Term 1 | Monday 29th January to Friday 13th April                |
| Term 2 | Monday 30th April to Friday 6th July                    |
| Term 3 | Monday 23rd July to Friday 28th September               |
| Term 4 | Monday 15 <sup>th</sup> October to Friday 21st December |

### **School commencement 2018**

|                      |   |
|----------------------|---|
| Monday 29th January  | Staff commence                          |
| Tuesday 30th January | Students in Years 1-7, 11 & 12 commence |
| Tuesday 31st January | Students in Years 1-12 in attendance    |
| 30th Jan - 5th Feb   | Kindergarten Best Start Assessments     |
| Tuesday 6th February | Kindergarten commences                  |

# STAFF

## Senior Executive

|                               |                           |
|-------------------------------|---------------------------|
| <b>Principal</b>              | Rob Walker                |
| <b>Deputy Principal K-7</b>   | Yvonne Sharpe             |
| <b>Deputy Principal 8-12</b>  | Jenny Hart                |
| <b>Instructional Leader</b>   | Tracy Durham              |
| <b>Administrative Manager</b> | Cheryl McCarthy           |
| <b>Assistant Principal</b>    | Glen Cook<br>Isaac Fields |

## Teachers K - Year 6

|                       |  |
|-----------------------|--|
| <b>Class Teachers</b> | Angela Bolton<br>Glen Cook<br>Elizabeth Delman<br>Kylie Elliott<br>Isaac Fields<br>Fiona Fields<br>Annette McKay<br>Monique McLean<br>Zoe Warren<br>Jenny Wray |
|-----------------------|--|

## Teachers Years 7-12

|                       |   |
|-----------------------|---|
| <b>English / CAPA</b> | Head Teacher Kate Keogh (Acting)<br>Martine Borrack<br>Leonie Zann                          |
| Visual Arts           | Mark Robertson  |
| Music                 | Peter Beck  |
| <b>Mathematics</b>    | Head Teacher Baden Colliss<br>Simon Garvey<br>Paul Goggin                                   |
| <b>Science</b>        | Head Teacher Penny Cooper<br>Alison McGeary<br>Jason Stock<br>Karen Warwick<br>Luke Cleaver |

## PDHPE

|              |  |
|--------------|--|
| Head Teacher | Sonya Price<br>Phil Cook<br>Josh Andrews<br>Nikki Dryden |
|--------------|--|

## HSIE

|   |
|---|
| Sam Hawkey<br>Greta Nagle<br>Cheryl Patch<br>Robin Mather |
|---|

## LOTE

|                |
|----------------|
| Desiree Cotten |
|----------------|

## Technology & Applied Studies

|              |   |
|--------------|---|
| Head Teacher | Craig Gillespie<br>Adrian Delman<br>Tanya Entwistle<br>Chris Gillespie<br>Michelle Gray |
|--------------|---|

**Careers Advisor** Chris Hayward

## Librarians

|   |
|---|
| Ken Wythes<br>Linda Wythes<br>Brett Cornish |
|---|

## Special Education

|              |               |
|--------------|---------------|
| Head Teacher | Connie D'Anna |
|--------------|---------------|

## K-12 Support Staff

### Learning and Support

|                 |   |
|-----------------|---|
| <b>Teachers</b> | Elizabeth Delman<br>Fiona Fields<br>Susie Hancock<br>Corrinna Day |
|-----------------|---|

### Mild Intellectual

|                   |  |
|-------------------|--|
| <b>Disability</b> | Maryanne Clark                               |
| <b>MCC</b>        | Bianca Spencer<br>Jeff Towers<br>Cath Sharpe |

### School Assistants

|  |
|--|
| Nicki Belford<br>Kim Bell<br>Julie Cholerton<br>Rebecca Dicinoski<br>Jodie Manning<br>Cheryl McCarthy<br>Karen Roots<br>Karen Vidler<br>Jane Young |
|--|

## Learning Support Officers

|  |
|--|
| Scott Barker<br>Kristen Gillespie<br>Sue Hunter<br>Ivonne Mace<br>Geoff Manning<br>Toni McConnell<br>Lisa McFarlane<br>Ross McFarlane<br>Deb McPhie<br>Deb Pawsey<br>Mandy Powell<br>Gael Robinson<br>Alison Smith<br>Gay Steintal<br>Sue-Ellen Vallance |
|--|

## Technical Support Officers

|                                 |
|---------------------------------|
| David Burston<br>Jeremy Peachey |
|---------------------------------|

## School Counsellor

|             |
|-------------|
| Aina Martin |
|-------------|

## Aboriginal Education Officer

|               |
|---------------|
| Simone Barker |
|---------------|

## Community Liaison Officer

## Special Religious Education

|             |
|-------------|
| Les Moreman |
|-------------|

## Student Support Officer

|          |
|----------|
| AJ Brown |
|----------|

## General Assistants

|                              |
|------------------------------|
| David Moreman<br>Bernie Beer |
|------------------------------|

## Farm Assistant

|               |
|---------------|
| David Moreman |
|---------------|

## Cleaners

### (Employees of ISS P/L)

|   |
|---|
| Ruth Bell<br>Shane Burnie<br>Martin Folan |
|---|

## Director, Public Education

Dave Harvey  
NSW Dept Education & Training  
154 Ballina Road  
GOONELLABAH 2480  
6623 5900





# Evans River A - Z

## Aboriginal & Torres Strait Islander Education

Indigenous Education aims to improve retention and educational outcomes for Aboriginal students as well as educating all students about Aboriginal history, culture and contemporary Aboriginal Australia. Our Indigenous education program aims to provide a culturally rich environment where Aboriginal students feel valued and secure.

Initiatives to support Aboriginal education included the following:

- development of an Aboriginal perspectives booklet for KLAs (Key Learning Areas),
- employment of an Aboriginal Education Officer and an Aboriginal aide to assist students with literacy and numeracy,
- development of support structures for all Indigenous students through the work of the Aboriginal Education Officer,
- continuation of the Vision Program for secondary students, addressing such as cultural awareness, identity, student retention and goal setting,
- participation in the Aboriginal Sports Days,
- participation in the annual Croc Festival,
- Aboriginal Students Awards Night encourages retention and student engagement in learning.

## Assemblies

A Performance Assembly is held in the last week of Terms 1, 2 and 3. The Annual Presentation Assembly is held in the second last week of Term 4. Watch newsletter for dates. Assembly dates are published in the newsletter and all families are welcome any assembly throughout the year.

K-12 assemblies are held in weeks 4 and 8 in the gym starting at 1:05pm. On all other weeks there are 7-12 assemblies and Year meetings are held weeks 3, 6, 9 of each Term.

On these days lunch commences at 1:25pm and the afternoon session/period 5 begins at 2:15pm.  
K-6 assemblies held at 9:30am Friday.

## Assessment Procedures

The mandatory state wide exams are: National Assessment Program – Years 3, 5, 7, 9  
Higher School Certificate - Year 12

## Attendance

The Department of Education and Communities and Evans River K-12 School advise that it is a **legal** requirement that students attend school for the **entire school day**, each day that the school is open and offering lessons.

Absences should only occur because of illness, natural causes (floods) or for other reasons approved by the Principal. Please note: *It is not sufficient for parents to approve absences* and medical certificates should be supplied where necessary. Students who are frequently absent without explanation may be referred to the Home School Liaison Officer.

### Notification of Absences

It is a legal requirement that all absences be explained, this can be through one of three ways;

- 1) Responding to an absence notification. Text messages are sent out everyday requesting an explanation for student absence.
- 2) Written explanation, stating the reason for absence and signed by the parent/carer
- 3) Phone call to the school providing an explanation for absence

If absence is likely to exceed three (3) days, the school must be notified and the Principal's approval should be obtained for any long-term absence (eg family holidays).

## Bell Times

### Monday

| Time    | Kindergarten—Year 6                                     | Time    | Years 7-12  |
|---------|---|---------|---|
| 8:30am  |   | 8:30am  | Period 0 (Y11 & 12)   |
| 9:00am  | Morning Session, Roll Call & WEHMALLA (Year 5 & 6 only) | 9:00am  | Roll Call & WEHMALLA  |
|         |   | 9:20am  | Period 1  |
|         |   | 10:10am | Period 2  |
| 11:00am | Recess  | 11:00am | Recess  |
| 11:25am | Mid Session   | 11:25am | Period 3  |
|         |   | 12:15am | Period 4  |
|         |   | 1:05pm  | Assembly  |
| 1:05pm  | Lunch   | 1:25pm  | Lunch   |
| 1:50pm  | Afternoon Session                                       | 2:15 pm | Period 5  |
| 2:55pm  | Close   |         |   |
|         |   | 3:05pm  | Close of day for students<br>Faculty meeting time for teachers. |
|         |   | 3:30pm  | Close   |

### Tuesday - Friday

| Time    | Kindergarten—Year 6                                     | Time    | Years 7-12           |
|---------|---|---------|----------------------|
| 8:30am  |   | 8:30am  | Period 0 (Y11 & 12)  |
| 9:00am  | Morning Session, Roll Call & WEHMALLA (Year 5 & 6 only) | 9:00am  | Roll Call & WEHMALLA |
|         |   | 9:20am  | Period 1             |
|         |   | 10:10am | Period 2             |
| 11:00am | Recess  | 11:00am | Recess               |
| 11:25am | Mid Session   | 11:25am | Period 3             |
|         |   | 12:15pm | Period 4             |
| 1:05pm  | Lunch   | 1:05pm  | Lunch                |
| 1:50pm  | Afternoon Session                                       | 1:50pm  | Period 5             |
|         |   | 2:40pm  | Period 6             |
| 2:55pm  | Close   |         |                      |
|         |   | 3.30pm  | Close                |

## Bikes & Skateboards

By law students must wear helmets when cycling. Care must be taken when entering and leaving school grounds. Bikes and skateboards are to be walked in the school grounds and across school crossings. All bikes should be locked in the racks provided. It is advised that all skateboards and scooters be left at the Deputy's office, after permission is granted. Entry is through the southern most Cypress Street entrance gate (alongside Performance Hall).

## Bus travel

It is important that your child knows which bus they will be travelling on before starting school, please contact Ballina Bus Lines or Northern Rivers Bus Lines for pickup points and times.

- K-6 students who live more than 1.6km radial distance from the school (or 2.3km by the most practical walking route) are eligible for free bus travel.
- Kindergarten, Year 1 and 2 students are eligible for free travel irrespective of distance.
- 7-12 students who live more than 2km radial distance from the school are eligible for free bus travel.

Buses arrive and depart from Cypress Street. Applications for bus travel must be completed online at [transportnsw.info/school-students](http://transportnsw.info/school-students)

## Canteen

The canteen is operated by the P&C Association and employs a Canteen Supervisor who oversees the daily running of the canteen. While the Supervisor is a paid position the canteen continues to function well by the support of parents and carers volunteering their time. The Supervisor adheres to the Healthy Canteen Initiative that seeks to supply fresh and inviting food to students and staff at a reduced cost. Breakfast is available free to all students at the canteen each morning from 8:30 and sponsored by IGA Evans Head. If you would like to volunteer call the canteen on 6682 6888.

## Carnivals

Each year the school holds three carnivals, swimming, athletics and cross country. The swimming carnivals are held at Evans Head Aquatic Centre, and the athletics and cross country carnivals are Evans Head events. Competition between the house groups is keen with extra points scored for the best war cry, a highlight with the students. Parents and carers are welcome and are encouraged to attend. Student attendance on these days is mandatory.

## Cars & Driving

Students who are licensed can drive a car to school. A driver's form needs to be completed and returned to the school. *This is an Education Department Requirement.*

## Curriculum Patterns & Key Learning Areas (KLA's)

| Key Learning Area   | Kindergarten to Year 6* | Years 7 & 8* # |
|---|-------------------------|----------------|
| • English   | ☺                       | ☺              |
| • Mathematics   | ☺                       | ☺              |
| • Science & Technology                                      | ☺                       | ☺              |
| • Human Society & It's Environment (HSIE)                   | ☺                       | ☺              |
| • Personal Development, Health & Physical Education (PDHPE) | ☺                       | ☺              |
| • Creative and Practical Arts                               | ☺                       |                |
| • Technology and Applied Studies                            |                         |                |
| Agriculture & Technology                                    |                         | ☺              |
| • Creative & Performing Arts                                |                         | ☺              |
| • Indonesian  |                         | ☺              |
| • Life & Career Studies                                     |                         | ☺              |

\*All students must participate in sporting activities

# Students study all subjects, this assists them when making decision about specialising in studies for Years 9 & 10.

## Curriculum continued

NOTE: For Year 11 & 12 see Higher School Certificate

| Year 9 2017 |  |
|-------------|--|
| Line        | Subject  |
| 1           | English  |
| 2           | Mathematics  |
| 3           | Science  |
| 4           | HSIE   |
| 5           | PDHPE  |
| 6           | Visual Art<br>Marine<br>Physical Activity & Sport Studies                            |
| 7           | Indonesian<br>Music<br>Wood Technology   |
| 8           | Food Technology<br>Metal/ Electronic Technology<br>Physical Activity & Sport Studies |

| Year 10 2017 |  |
|--------------|--|
| Line         | Subject  |
| 1            | English  |
| 2            | Mathematics  |
| 3            | Science  |
| 4            | HSIE   |
| 5            | PDHPE  |
| 6            | Agriculture<br>Indonesian<br>Music<br>Food Technology                        |
| 7            | Elective History<br>Marine Technology<br>Physical Activity & Sport Studies   |
| 8            | Drama<br>Physical Activity & Sport Studies<br>Wood Technology<br>Visual Arts |

## Equipment

Pencil cases: All children (excluding K - Year 2) need to be fitted out with the basic equipment of pencil, sharpener, ruler, glue stick, red & black pens, eraser, scissors. **Liquid paper is not to be brought to school.** For the older students a diary is an essential item and can be purchased at the school office. Also available for purchase at the office are pens, pencils, stocked pencil cases, calculators and USBs.

## Excursions

Excursions are valuable in that they supplement the learning taking place in the classroom, by providing students with the opportunity to see and experience at first hand, places, events and objects which are being studied. The school participates in local public speaking, debating and eisteddfod activities throughout the year.

| YEAR   | DESTINATION                    | WHEN          | Approx Cost |
|--------|--------------------------------|---------------|-------------|
| 4/5/6  | Lake Ainsworth - Alternate Yrs | Term 3        | \$265       |
| 4/5/6  | Canberra - Alternate Yrs       | Term 3        | \$\$        |
| 8      | Yr 8 Camp                      | Term 4 Week 5 | \$230       |
| 7 & 10 | Moreton Is                     | Term 4 Week 4 | \$260       |
| 10     | Sydney & Snow                  | Term 3 Week 4 | \$950       |

Parental permission is required for all excursions.

A permission note will be attached to information concerning the proposed excursion that is usually forwarded in the weekly newsletter.

## Higher School Certificate

Students have four pathways of study from which to choose

1. *HSC and ATAR (University Entrance)* - a pattern which provides an opportunity to study for the Higher School Certificate and meet requirements for calculation of a Australian Tertiary Admission Rank (ATAR)
2. *HSC, no ATAR* - a pattern for those students who return to school to gain a Higher School Certificate but do not intend seeking university entrance.
3. *The School to Employment Program (STEP)* - this pattern does not lead to a HSC but leads to credentials in TAFE and employment related areas.
4. *Life Skills HSC*— this pattern leads to the completion of a credentialed Higher School Certificate. Student who present with special needs and require variation from the Board of Studies syllabus often take this pattern.

Students may choose subjects from each of the three pathways should they wish. Students may elect to complete their studies over a longer period of time should this be desirable. For example, the completion of the Higher School Certificate program usually is taken over a two year period (Years 11 and 12) however, students may spread their studies over up to five years.

In 2018 the following subjects are offered on the lines below. Unless studying through the STEP or Life Skills program students must choose one subject from the three lines offered.

| Senior Course 2018 |   |
|--------------------|---|
| Line               | Subject   |
| 1                  | English - Standard<br>Biology<br>Design & Technology<br>Sport, Lifestyle & Recreation (SLR)<br>STEP                                       |
| 2                  | Agriculture<br>Community & Family Services (CAFS)<br>Maths - General<br>Mathematics<br>STEP<br>Visual Art                                 |
| 3                  | Ancient History<br>Business Studies<br>Exploring Early Childhood (EEC)<br>Geography<br>Hospitality<br>Sport, Lifestyle & Recreation (SLR) |
| Off-line           | Maths - Extension 1<br>TAFE<br>Distance Education   |

### ***The School to Employment Pathway (STEP)***

This course does not lead to a HSC but leads to credentials in TAFE and employment related areas. One day a week structured work place learning plus one day (or two half days) consisting of half day TAFE and half day Vocational Education and Training (VET). The remaining three days of the STEP Course includes:

... continued over page

| Course                           | Periods per Cycle* |           |   |
|----------------------------------|--------------------|-----------|---|
| English CEC                      | 8                  | Mandatory |   |
| Work Studies                     | 2**                | Mandatory |   |
| Preliminary Maths - General      | 8                  | Mandatory |   |
| Vocational Elective              | 16 (Yr A or B)     | Choice    |   |
| Content Endorsed Course Elective | 16 (Yr A or B)     | Choice    |   |
| TAFE Elective                    | 4                  | Choice    |   |
| Living Skills                    | 4                  | Mandatory |   |
| Sport                            | 4                  | Mandatory | The periods are of approximately 50 minutes duration. A cycle is two weeks. |
| Crossroads (Mandatory PDHPE)     | 1                  | Mandatory |   |

Plus full day Work Placement

| Status                           |  | Accreditation  |
|----------------------------------|--|--|
| English CEC                      | <ul style="list-style-type: none"> <li>• Selections of modules including</li> <li>• Spoken English, Public Writing, Writing Using a Computer-Print Journalism etc</li> <li>• NC5002 Writing Skills for Work to be integrated with this course</li> <li>• NC5003 Job Seeking Skills</li> </ul>  | Accreditation in school-based Certificate (many national modules embedded in this course)                      |
| Work Studies                     | <ul style="list-style-type: none"> <li>• Content Endorsed Course</li> <li>• 12 modules including Career Planning/Job Seeking Interviews/Workplace Communication/Work Placement</li> <li>• NCS005 Dealing with Conflict integrated with this course</li> <li>• Aligned with Certificate 1 in Work Education</li> </ul>  | BOS Record of Achievement<br>Accreditation in 016 Certificate in CWE Work Education<br>Work Placement Log Book |
| Preliminary Maths - General      | <p>2 Strands: 1.Foundation Maths<br/>2.Information Technology</p> <ul style="list-style-type: none"> <li>• Foundation Maths</li> <li>• Functional Maths D Personal Management/Fractions/Decimals/Ratio/Proportion/Percentage/Management Geometry of Triangles/Probability Statistics etc.</li> <li>• Keyboard skills/Computer Operation/Database/Accessing the Web etc</li> <li>• Students enrolled in Information Technology will work on other competencies at this time.</li> </ul> |  |
| Content Endorsed Course Elective | Content Endorsed Course<br>Select course relevant to interest/activities of students eg Ceramics, Exploring Early Childhood, Sport Lifestyle & Recreation Studies, Marine Studies  | BOS Record of Achievement  |
| TAFE                             | Choice of TAFE courses at Ballina, Wollongbar, Lismore TAFE  | TAFE Certificate   |
| Vocational Elective              | School Based Course<br>Hospitality or Information Technology or Construction   | BOS Record of Achievement  |

## Homework

Homework is an important part of your child's learning experience and provides them the opportunity to develop their thinking, concentration, time management and research skills. It also helps develop self discipline, personal responsibility and independence thus a great skill for life-long learning. Good organisation and planning helps get the most out of homework time, a quiet spot in which to work, regular set times and for older students the use of a school diary all assist students to reach their full potential.

| Types of Homework  | Recommended home study:   |
|--|---|
| <p><i>Practice exercises:</i> helps students to remember and practice new skills</p> <p><i>Preparatory homework:</i> students source and read background information to prepare for future lessons and assignments</p> <p><i>Extension:</i> encourages students to pursue knowledge individually and imaginatively.</p> <p>Study: reading book and notes and preparing summary notes and completing sample tasks, exams, drafts for assessments.</p> | <p>K - 4:            20 - 30 minutes per day</p> <p>5 - 6:            30 minutes per day</p><br><p>Secondary:      Year 7/8 - 1 hour daily</p> <p>                      Year 9 - 1.5 hours daily</p> <p>                      Year 10 - 2 hours daily</p> <p>                      Year 11/12 - 2.5 hours daily</p> |

## House Groups

Good sportsmanship and healthy competition is encouraged and there is strong competition between the house groups at the school carnivals. Upon enrolling, students are allocated a house group and families are always kept in the same house.

|           |        |
|-----------|--------|
| Sharks    | Red    |
| Marlins   | Yellow |
| Dolphins  | Blue   |
| Stingrays | Green  |

## ID Cards

Students from Year 7 to 12 are issued annually with a photo ID card. The card is distributed after the school photographs have been printed and returned to the school.

## Internet Use

Students can access the internet in the Library or the computer labs. You need to get a password from Mr Delman before accessing this service.

## Late to School

Each day is commenced with a compulsory roll call and students are given all relevant information for that day and attendance is marked. Any student who arrives late must sign in at the office and collect a printed late pass from the staff to take to their teacher. A note informing the school of a justifiable reason should be presented upon arrival.

## Leave Pass

Students are not permitted to leave the school grounds unless they have first forwarded a permission note from parents to the school office where a Leave Pass may be issued. Office staff will consult with the Deputy Principal to ascertain whether or not a pass can be granted for the reason on the note. Granting of such passes is a privilege extended at the discretion of the Principal.

## Leaving the school or transferring

Any child leaving the school to go to another school or employment must bring a note from their parent or guardian to that effect to the front office and request a leavers clearance form. All fees must be paid, library books and texts must be returned before a clearance is granted.

## **Library**

The school library is a spacious comfortable facility catering to the educational needs and general interests of our students and staff. Our friendly staff members, Ken Wythes, Brett Cornish, Linda Wythes and Julie Cholerton, are eager to meet any requests. Inside the library is a senior student study area, two seminar rooms, a works office and enough learning space to adequately seat two class groups at any one time. The library also houses computers for student use and well-stocked shelves. Class and individual library use is constant, five days a week and we welcome any incoming students or staff to make use of our human, book and computer resources.

## **Lockers**

Lockers are available for hire at the cost of \$10 per year. Please see Kristen Gillespie (Community Liaison Officer) for assistance.

## **Lunch Passes**

Students are not permitted to leave the school grounds unless they have first forwarded a permission note from parents to the school office where a Leave Pass may be issued. Office staff will consult with the Deputy Principal to ascertain whether or not a pass can be granted for the reason on the note. Granting of such passes is a privilege extended at the discretion of the Principal. Senior students may have extended to them the privilege of leaving the school grounds at lunch time on Wednesdays and Fridays. A note from parents should be forwarded to the Deputy Principal to enable the school to consider this request.

## **Merit & Awards Scheme**

The merit awards scheme is a component of the school's Student Welfare & Discipline Policy. It is described on page 11 of the policy booklet.

## **Music, Band & Choir**

Music is an important aspect of your child's education. In Kindergarten to Year 6 a variety of musical lessons are initiated by the class teacher. Examples being recorder, choir and class performances for assemblies.

In Year 7 & 8 students have time allocated to music lessons and can then continue on to elective music in Years 9 to 12. Bands are formed by groups of students with similar interests overseen by the music teacher.

Students have the option to participate in music tuition. The school offers group guitar and keyboard lessons on a Monday and Wednesday with Elle Gerrand at a cost of \$12 per lesson, with a maximum of three students. Hothouse Music offer tuition in drums, clarinet, vocals and more on Wednesday's at a cost of \$24 for an individual lesson or \$12 for a group lesson. Lessons are held during school hours. For further information contact the school office.

## **Newsletter**

The School Newsletter is issued every Thursday via email. It is an important document for all parents to receive as it lets you know what's happening in the school and will help you prepare your child for upcoming events. The school requests that all families who are online at home access the newsletter via the internet. To ensure you get your copy telephone the office and leave your email address.

## **Orientations— Kindergarten, Year 7 & Year 11**

Orientation and information nights are held throughout the previous year for your child beginning these year groups. Information about when these are planned is distributed through the school newsletter, local public schools, preschools and playgroups.

## **Out of School Hours**

Our goal is to develop and maintain a superior quality school for our students. With that in mind, it is important that we protect our grounds, buildings and sporting facilities. Accordingly, students and members of the public are not permitted to enter school grounds outside of normal school hours. This particularly applies to the riding of skateboards and the use of the games courts and playing fields. Police will be



contacted to respond to trespassers and any students trespassing will also have to account for their actions to the school Welfare & Discipline Committee.

Community groups are required to enter into contractual arrangements with the school to enable their use of school facilities.

## Parent Meetings

**Parents and Citizens Association** meet every third Monday of the month in the Library at 4:30pm. P&C activities include managing the canteen, lockers, uniform store and fundraising. The P&C provides valuable resources for the school that enhance the learning environment for all students. Your participation is most appreciated by the staff and students. The President of the P&C is Japheth Cooper.

## Permission to Publish

All new enrolments are asked to sign a Permission to Publish section on both the Enrolment Application form and the General Permission Note. The media, local Council and Department Education and Communities dignitaries regularly visit our school to publicise our successes. With this permission we can promote the school (and pictures of your child) in the local press, the school newsletter and the school's Facebook page.

## Phone and contact details

Please ensure you contact the school when you change your address, home phone, mobile or email address. This allows the school to stay in quick contact with you should the need arise.

## Parent Online Payment (POP)

Parents will be able to make payments towards subject contributions, excursions, uniforms etc. at their own convenience from home. This option is available through the schools website – [www.evansriver.nsw.edu.au](http://www.evansriver.nsw.edu.au) A "\$ Make a payment" link is located on the ribbon bar on the front page of the website. By selecting the link, parents are taken to a secure Westpac payment page; they will no longer be in the schools website. Parents should be advised that details are not retained by this QuickWeb site, protecting parents from fraudulent transactions and ensuring compliance with PCI (Payment Card Industry) DSS (Data Security Standard). This means that card details will have to be re-entered each time a new payment is made. POP is mobile friendly which makes using the system even more convenient for parents. For further information please contact the school office.

## Positive Behaviour for Learning (PBL)

Evans River K-12 School began this exciting new discipline program in 2008. The program sees school rules, reward systems and consequences explicitly taught to students. We find this enables students to clearly understand school expectations and leads to a happy learning environment.

## Quality Teaching

Quality Teaching provides a consistent pedagogical (the art and science of teaching) framework within which all NSW Teachers and schools can operate. QT recognises it is the quality of pedagogy that most directly and most powerfully affects the quality of student learning. Most importantly QT builds on what teachers already know and value, and many already do in terms of quality teaching practice. The three dimension of the NSW Quality Teaching model are:

**Intellectual quality:** refers to teaching focused on producing deep understanding of important, substantive concepts, skills and ideas. Such teaching treats knowledge as something that requires active construction and higher-order thinking and to communicate substantively about what they are learning.

**Quality learning environment:** refers to teaching that creates classrooms where students and teachers work productively in an environment clearly focused on learning. This sets high and explicit expectations and develops positive relationships between teachers and students and among students.

**Significance:** helps make learning meaningful and important to students. Such teaching draws clear connections with student's prior knowledge and identities, with contexts outside the classroom, and with multiple ways of knowing or cultural perspectives.

## Reporting to Parents

Parents are invited to make an appointment to see their child's teacher or year advisor at any time to discuss progress. Student-led Conference (K-6) and Parent Teacher Nights (Year 7-12) are conducted giving you an opportunity to meet your child's teachers. Interim reports are issued to give parents and carers an understanding of how well students are performing.

## Returning notes and money

*Kinder - Year 6:* When forwarding permission notes and/or money to school please ensure that these are enclosed in a sealed envelope with your child's name and class and the amount enclosed.

*Year 7 - 12:* Permission notes and money is taken by the office staff at the student window each morning from 8:30am - 9:00am, recess and lunch.

## School Contribution

School contributions at Evans River K-12 School are a fee levied on the families of the school to enhance the opportunities available to the students. The level of the contribution is determined each year through a process of consultation with representatives of parents, students and staff. The School Council has settled on the following contributions:

|                              |        |
|------------------------------|--------|
| First Child                  | \$40   |
| Second Child                 | \$30   |
| Third Child                  | \$20   |
| Fourth & Subsequent children | No fee |

## School Council

The School Council consists of three parent representatives, three staff members, two students nominated by the SRC, two community members, the P&C President and the school Principal. The council is a direction-setting organisation which also monitors the progress of the overall school budget. Parents are encouraged to speak with their representatives regarding Council business and to consider standing for election.

## Scripture

Lessons are held each Friday for K-6 Students and one period per week for Years 7-10.

## Sick Bay

Kindergarten to Year 6 children may be permitted access to the Sick Bay after consulting their class teacher. Students in Years 7-12 may be permitted access to the Sick Bay following consultation with their class teacher or teacher on duty who will issue the student with a red slip. Students are monitored in the Sick Bay via closed circuit television by the office. If a student feels well enough to return to class after a period of time in the clinic, this may be permitted, alternatively parents may be contacted should the student wish to go home.

**If your child is unwell please keep him or her at home as school is not the place for a sick child.**

## Sporting Events

The school provides opportunities for students to participate in all types of individual and team sports. These include: athletics (cross-country, tabloids, high jump, sprinting, relays, discus, long jump, tunnel ball), swimming (water polo, water volleyball, relays, swimming - all strokes, run/swims, water basketball, life saving skills), dance, lawn bowls, cycling, softball, cricket, indoor cricket, tennis, soccer, hockey, touch football, golf, rowing, lifesaving, underwater hockey, water volleyball, surfing, fishing, basketball, netball, tee-ball, table tennis, walking, yoga. Successful performance at school level may lead to representation at District/Zone, Area and State level.

### Anticipated Sporting Calendar:

|        |   |  |
|--------|---|--|
| Term 1 | - | School Swimming Carnival   |
| Term 2 | - | School Athletics Carnival<br>School Cross Country<br>Football/Netball Trials |
| Term 3 | - | Area & State Athletics Carnivals   |
| Term 4 | - | Intensive & Special Swimming Schemes   |

The school participates in State Knockout competitions. Final confirmation of participation will be reliant on student interest.

|       | Primary Schools Sports Association<br>(PSSA)   | Combined High Schools Sports Association<br>(CHS)  |
|-------|--|--|
| GIRLS | Touch<br>Basketball<br>Netball<br>Soccer       | Basketball Open + u15's<br>Hockey<br>Football<br>Netball Open + u15's<br>Rugby Union Opens + u15's<br>Touch<br>Volleyball                    |
| BOYS  | Soccer<br>Rugby Union<br>Rugby League<br>Touch | Basketball Opens + u15's<br>Beach Volleyball Jnr & Snr<br>Cricket<br>Football<br>Futsal u14's & u16's<br>Rugby League<br>Touch<br>Volleyball |
| CoEd  |  | Lawn Bowls<br>Table Tennis   |

## SRC - Student Representative Council

Representatives on the K-6 SRC are elected by their fellow class mates or peers. Two students from each class or year are selected and will represent for a 6 month term of office. Years 7 –12 students self nominate for inclusion into the SRC. Interested students need to complete an application form and have their application endorsed by two classroom teachers and a head teacher. An interview process will then be undertaken and after collaboration of the applicants the year 7-12 SRC committee will be announced. They meet every morning during Wehmalla (START) and every second Friday (Week A) to discuss issues concerning their cohort, fundraising and represent students on other school committees. The term of office for years 7-12 is for one year.

## Student Assistance Scheme

Each year the government provides some money to help parents and students who may be experiencing financial difficulty to purchase equipment, uniforms or help pay excursions. These funds are strictly limited and they are distributed on a needs basis. Parents and caregivers can obtain an application form from the front office or uniform store and confidentiality is assured.

## School Fees - Primary

Book packs for all primary classes (K-6) are available for purchase at a cost of \$30 each.

## School Fees - Secondary

See table on pages 22 & 23 for Year 7 - 12 Subject Contribution Fees.

## Uniform

The Evans River K-12 School Council has determined that Evans River K-12 School will be a uniform-wearing school. The Council has requested that the school enforce the wearing of the school uniform without variation. This means that students are expected to dress in the uniform as described below. Parents who are uncertain as to whether or not an item of clothing meets this policy's requirements should consult with a Deputy Principal or the Principal prior to purchasing the item. Regular checks of student dress are conducted. Students out of uniform are afforded a warning, further breaches of the dress requirements are dealt in accordance with the school Student Wellbeing and Discipline Policy.

## **Sports Uniform**

The wearing of the navy "sun sense" hat is encouraged. The hats should be plain navy in colour and have a broad rim. Suitable hats are available through the school uniform shop. In the winter time, students electing to wear beanies should ensure they are plain navy in colour.

- Jade Green Shirt with navy side inserts and embroidered logo. Unique "Evans River K-12" collar design. Only available through the school uniform shop.
- Navy shorts, track pants, skirts, skorts or culottes. Coloured inserts, stripes, contrasting stitching and logos are not acceptable. Denim is not acceptable. The design of these items has deliberately not been specified and so some variation in design is permissible. The clothing, however, must be plain navy in colour. While the school uniform shop maintains a limited supply of these items, the school has identified that these items are available for sale at very reasonable rates from stores in the major shopping centres in Ballina and Lismore.
- Navy socks or tights and black joggers.

## **Winter Wear**

Students may wear plain navy long trousers or plain navy track pants. Girls may wear, with skirts, plain navy tights. A long sleeve version of the school shirt is also available. Plain navy beanies are acceptable. Students may also wear either of the following:

- School navy jumper or chinook, only available through the school uniform shop.
- School track suit, only available through the school uniform shop.
- Non-school jumpers, chinooks or track suits are not acceptable.

## **In General**

Parents are requested to have all items of clothing and belongings clearly marked with their child's name. Parents are required to provide a note if a student is to attend school out of uniform at any time. The student will be issued with a pass for a specified period. During this time, it is expected that all efforts will be made to ensure the student returns to full uniform in the shortest possible time frame.

The Uniform Store is open on Friday mornings from 8:30am to 9:30am. An order form is available from the office.

A pool of school blazers and ties are also maintained by the office for students to use on occasions where they represent the school.

Several items are available displaying the school logo, these include the school tie, school badge, tea towels and stickers. These items are sold through the school office.

The following items are **NOT** acceptable school wear:

Beach wear, football socks, tank tops, singlets, football jumpers, tracksuits under skirts (either/or), multi coloured jumpers or tops, thongs, T-shirts or sloppy joes with a company logo.

## **Lost property**

Lost property is held until the end of term and is then washed and placed in the clothing pool for sale.

## **Practical subjects**

It is advised that students require the appropriate protective clothing for Science, Agriculture, Visual Art, Technics, Technology and Food Technology. For practical lessons, students must wear shoes with a solid sole and leather uppers.

## **Visitors to the School**

As a safety measure for all staff and students all visitors must report to the Front Office and sign in. A visitors sticker will then be given and must be worn while on the school grounds.

## **Volunteers**

Parents are invited to become involved in many school activities. Some of the activities for which parental assistance is sought are:-

\* assisting in classrooms with reading, maths, craft or writing,

- \* transporting children to and from school activities,
- \* assisting with covering of books,
- \* providing expertise and knowledge in lessons,
- \* participating in curriculum committees.

The school greatly appreciates the help given by parents and hopes that you will be able to assist in some way.

## Website

On the website [www.evansriver.nsw.edu.au](http://www.evansriver.nsw.edu.au) you can find all sorts of information about the school. Log on and have a look, you can download your child's timetable, the latest newsletter, look at curriculum and support staff available at the school.

## Wellbeing of students

The staff at Evans River K-12 School accept responsibility for student wellbeing acknowledging that they share the responsibility with parents/guardians/caregivers of the students and the general community.

Due to the unique nature of Evans River K-12 School, much of the caring in our school occurs spontaneously and incidentally, as it does in any community of caring people. Evans River K-12 School has advantages in that:

- it is small,
- it is seen as an integral part of the community, and
- the school receives, or can easily obtain, information about the lives and wellbeing needs of students.

This unique nature allows wellbeing to be fostered through:

- casual conversation and interaction in the classroom and playground,
- small numbers which permit a more personal interaction with students fostering warmth, a supportive environment and respect, and
- familiarity with problems and backgrounds which enhances approachability and acceptance.

Teachers at Evans River K-12 School are constantly aware of the influence of social pressures on their students, including the influence of peers and the media. Such matters are also of central concern to parents/guardians/caregivers. Teachers at Evans River K-12 School respect the responsibilities of parents/guardians/caregivers; and consultation, involvement and participation are actively sought.

The school operates a Student Wellbeing and Discipline Policy to advise students in regard to their conduct. The Policy incorporates a student's rights and responsibilities, the school's Core Rules, details of the Merit Awards Scheme and Discipline System. A copy of the booklet is provided to each student on enrolment. Additional copies are available from the school office.

In short our school aims to promote in students:

- an ability to communicate effectively,
- a coherent set of values to guide behaviour,
- a sense of personal and social responsibility for their actions and decisions,
- a sense of personal dignity and worth,
- self-reliance,
- a sense of cultural ability,
- a feeling of belonging to the wider community,
- a caring attitude towards others, and
- an ability to form satisfying and stable relationships.

## Welfare and Discipline Policy

This booklet contains a wealth of information with regard to school and departmental policy. Contents include Merit Award Scheme, Discipline Code, Students Rights and Responsibilities and Attendance. A copy of this booklet is included in your orientation pack or available at the Front Office. It is important that the acceptance notice which is included with the Policy is signed and returned to the school.

## Subject & Elective fees - Years 7-12 2018

| SUBJECT                            | YEAR 7* | YEAR 8* | YEAR 9*                  | YEAR 10* | NOTES   |
|------------------------------------|---------|---------|--------------------------|----------|---|
| English                            | \$15    | \$15    | \$25                     | \$25     |   |
| Mathematics                        | \$15    | \$15    | \$15                     | \$15     | Student calculator can be purchased at office for \$10 and is necessary from Yr 7 |
| PDHPE                              | \$10    | \$10    | \$10                     | \$10     | For booklet   |
| Science                            | \$20    | \$20    | \$25                     | \$30     |   |
| HSIE – History                     | \$10    | \$10    | \$20                     | \$20     |   |
| HSIE - Geography                   | \$10    | \$10    | \$10                     | \$10     |   |
| LOTE Indonesian                    | \$15    | \$15    |                          |          |   |
| Music                              | \$17    | \$17    |                          |          |   |
| Technology                         | \$40    | \$40    |                          |          |   |
| Food Technology                    | \$25    | \$25    |                          |          | \$25 per/term<br>Depending on timetable   |
| Visual Arts                        | \$25    | \$25    |                          |          | Plus Art Diary \$5  |
| Careers                            |         |         | \$10                     | \$10     |   |
| Agriculture                        |         |         | \$30                     | \$30     |   |
| Electronics                        |         |         | \$45                     |          |   |
| Food Technology                    |         |         | \$100                    | \$100    |   |
| Indonesian                         |         |         | \$25                     | \$25     |   |
| Marine Technology                  |         |         | \$30                     | \$30     |   |
| Ind Tech - Metal                   |         |         | \$45 + Booklet<br>\$6.80 | \$45     | Plus cost of major project  |
| Music                              |         |         | \$25                     | \$25     |   |
| Physical Activity and Sports Study |         |         | \$20                     | \$20     |   |
| Ind Tech - Wood                    |         |         | \$45 + Booklet<br>\$6.80 | \$45     | Plus cost of major project  |
| Visual Arts                        |         |         | \$37                     | \$37     | Plus cost of diary  |

\*Plus general school contribution fees

## Subject & Elective fees 2018 (continued)

### SENIOR COURSES

| SUBJECT                    | NOTES                 |  |
|----------------------------|-----------------------|--|
| English                    | \$50                  |  |
| <b>ELECTIVES</b>           |                       |  |
| Agriculture                | \$60                  |  |
| Ancient History            | \$50                  |  |
| Biology                    | \$60                  |  |
| Business Studies           | \$50                  |  |
| Community & Family Studies | \$40                  |  |
| Design & Technology        | \$80                  |  |
| Exploring Early Childhood  | \$60                  |  |
| Geography                  | \$50                  |  |
| Hospitality                | \$200 (\$50 per term) | Plus \$60 for Chef Uniform                                     |
| Mathematics                | \$30                  | Recommend purchase Past papers & Solutions booklet approx \$20 |
| SLR                        | \$20                  |  |
| Visual Art                 | \$40                  |  |
| STEP                       | \$30                  |  |
| Work Studies               | \$15                  |  |

\*Plus school contribution fees